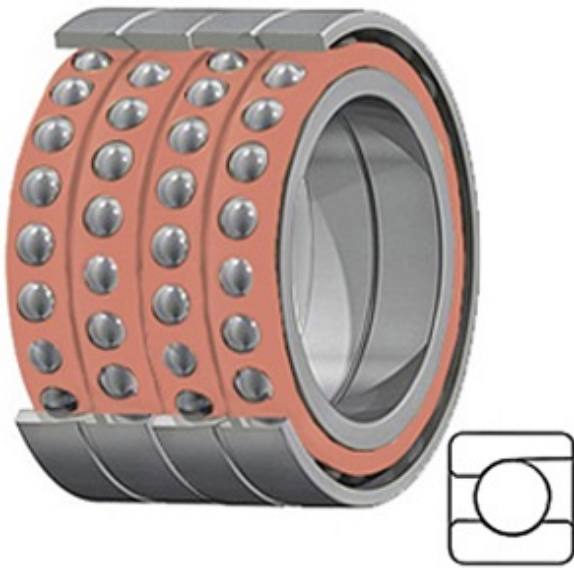




Shenyang Sharjah Bearing Co.,Ltd.



2MM9338WI QUM Bearing 2D drawings and 3D CAD models

7.48 Inch | 190 Millimeter x 10.236 Inch | 260 Millimeter x 5.197 Inch | 132 Millimeter TIMKEN 2MM9338WI QUM Precision Ball Bearings

Bearing No. 2MM9338WI QUM

Category	Precision Ball Bearings
Inventory	0.0
Manufacturer Name	TIMKEN
Minimum Buy Quantity	N/A
Weight	19.34
Product Group	B04270
Enclosure	Open
Precision Class	ABEC 7 ISO P4
Material - Ball	Steel
Number of Bearings	4 (1 Quadruplex Set)
Contact Angle	15 Degree
Preload	Medium
Raceway Style	1 Rib Outer Ring
Cage Material	Phenolic
Rolling Element	Ball Bearing
Mounting Arrangement	Quadruplex-Universal
Flush Ground	Yes
Inch - Metric	Metric
Other Features	Single Row Angular Contact Super High Precision
Long Description	190MM Bore; 260MM Outside Diameter; 132MM Width; Open Enclosure; ABEC 7 ISO P4 Precision; Steel Ball Material; 4 (1 Quadruplex Set) Bearings;



Shenyang Sharjah Bearing Co.,Ltd.

	15 Degree Contact Angle; Phenolic Cage Material; 1 Rib O
Category	Precision Ball Bearings
UNSPSC	31171531
Harmonized Tariff Code	8482.10.50.28
Noun	Bearing
Keyword String	Angular Contact Ball
Manufacturer URL	http://www.timken.com
Manufacturer Item Number	2MM9338WI QUM
Weight / LBS	42.6
B	5.197 Inch 132 Millimeter
d	7.48 Inch 190 Millimeter
D	10.236 Inch 260 Millimeter